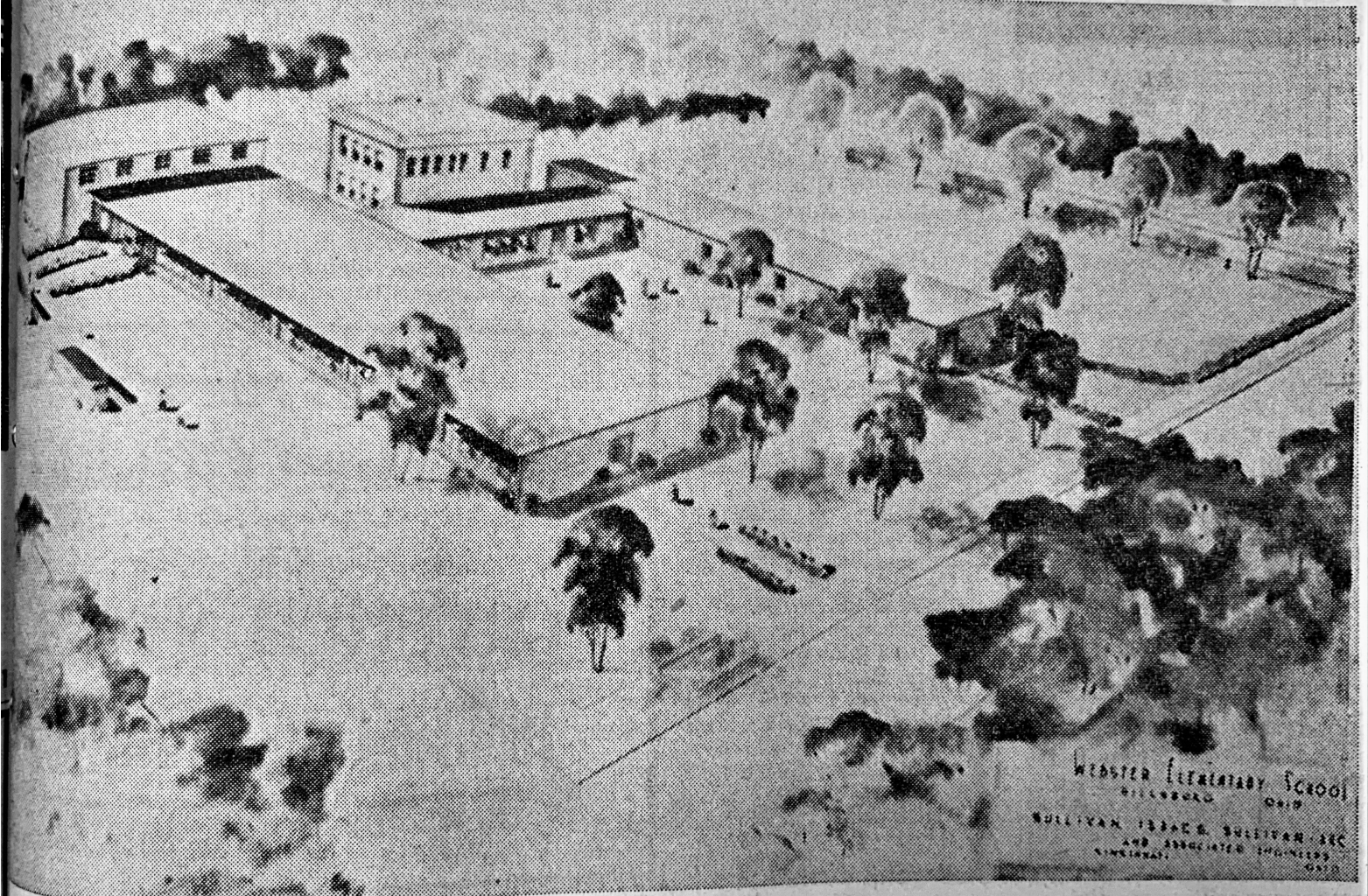


# One New School, Coming Up



WEBSTER ELEMENTARY SCHOOL  
HILLSBORO, OHIO  
SULLIVAN, ISAAC & SULLIVAN, ARCH.  
AND ASSOCIATED ENGINEERS  
CINCINNATI, OHIO

THIS IS IT—Shown here is an architect's impression of how the new Webster elementary school will appear when it is completed. The scene is as it will appear if you were at the corner of West Walnut and Elm Street, looking southeast, with Walnut at the top and Elm at right. The new building will be built in a U-shape around the old building, which must remain standing for several years yet. The two story structure at the top left center is the old annex which will be retained. The larger-appearing wing at the far left is a multiple-purpose room—gym, cafeteria and auditorium. In the double-wing in the foreground will be eight classrooms, with a corridor down the middle. In the far wing at the right will be five classrooms in a single row, with the corridor on the side facing the reader. The playground is in the upper right. A large-scale, colored drawing of the school is now on display here.

Webster Market